

Chip Clawson



Clawson_01 – Garden Arch – 1998 – Ceramic, concrete and tumbled bricks – 11'h x 12'w x 2'd – Early innovation using hollow ceramic shapes filled with concrete and rebar. Also developed tumbled bricks for this project.

**All Women Are Role Models Sculpture
Montana Women's Prison
2005**



"Great Mother Arch"



"All Women Are Role Models Arch"



"Loving Mother Arch"

Clawson_ 02 – All Women Are Role Models Sculptures – 2005 – All Women Are Role Models Arch – Ceramic and concrete – 11'h x 15' x 2'd – Great Mother Arch – 11'h x 8'w x 2'd – Loving Mother Arch – 4'h x 8'w x 2'd – More complicated use of hollow ceramic shapes and risk involved when undertaking figurative work on a major project with limited experience with figurative sculpture. These sculptural arches are located at the Montana Women's Prison in Billings, MT (MAC Percent for Art Commission).



**Biggo - A Fantasy Fish Bench
Great Northern Towncenter
Helena, MT
2009**

Clawson_03 – Biggo, The Fantasy Fish Bench – 2009 – Carved bricks and glaze – 4'h x 6'w x 4'd – The risk of a new construction method (carved bricks) on a major project.

202 Arch 2012



Clawson_04 – 202 Arch – 2012 – Fabric-formed concrete with ceramic fossils – 10'h x 8'w x 2'd – The innovation of using fabric-formed concrete and including ceramic “fossils” in the concrete, then power washing to expose the fossils. Also the risk of power washing too soon and the sculpture collapsing.

Ode to Edward James 2018



Clawson_05 Ode to Edward James – 2018 – Fabric-formed concrete, ceramic attachments and latex paint – 20'h x 16'w x 25'd - The innovation of using fabric-formed concrete on a very large and complex sculpture. The risk of painting a large sculpture with little painting experience.

Ode to Edward James 2018



Clawson_06 Ode to Edward James – 2018 – Same as Clawson_5 – With a detail of the ceramic attachments on underside of the left platform.

Ode to Edward James 2018



Clawson_07 Ode to Edward James – 2018 – The sculpture under construction showing the relationship of the poured columns to the already poured columns. This sculpture was under construction for three years.



Catalonia 2020

Clawson_08 Catalonia – 2020 – Fabric-formed concrete, glazed ceramic and un-glazed ceramic mosaic. –

14'h x 29'w x 28'd – The innovation creating a new surface (many ceramic attachments and mosaic) on the fabric-formed concrete cores. The mosaic was created by making thin textured slabs of clay, bisque firing the slabs, breaking the slabs, tumbling the pieces and firing to the correct temperature.

Catalonia 2020



Clawson_09 Catalonia – 2020 – This sculpture comprised of 6 columns and 1 arch and enriches a space called the “Courtio” and is complementary to the existing arch and columns.



**Early Suspended
Sculptures
Top - Twist**

Left - Devolving Bloom 1

**Right - Devolving Bloom 2
2007**

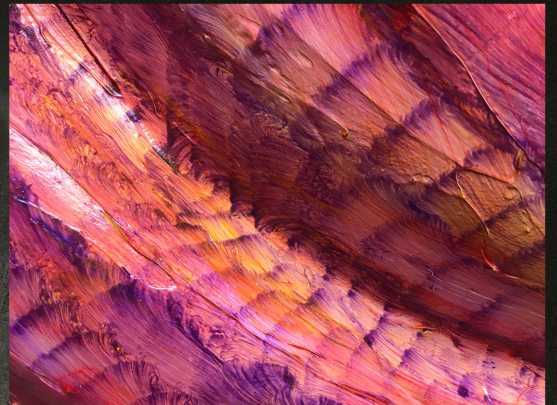
Clawson_10 – Early Suspended Sculpture. – Top – Origin – 2007 – 44”h x 30”w x 24”d – Scanned from my 11” clay model, carved on a 4-Axis router and sprayed with polyurea. This was my introduction to the possibilities of digital technology. - Left – Devolving Bloom 1 – 2007 – 30”h x 30”w x 8”d – Carved rigid foam, Bondo and latex paint. - Devolving Bloom 2 – 2007 – Same. The experimentation with Bondo ended for health safety reasons.



**Cozy
2017**

Clawson_11 – Cozy – 2017 – 8"h x 18"w x 4"d – Ceramic - Created by scanning a clay model, manipulated in a modeling program, 3D printed, a plaster slip-casting mold was created from the print, slip-cast in clay and fired. This was my first experimentation with personally using digital technology. This body of work and "Integrating Digital Technology into the Artistic Process" was supported by grants from the MAC and the Myrna Loy Center.

Lovely Dragon Flower 2021



Clawson_12 – Lovely Dragon Flower – 2021 – 8'h x 1'w x 4'd – Rigid foam, acrylic modeling paste, acrylic paint and wood. This sculpture was created by scanning a clay model, manipulated in a modeling program, carved on a 3-axis router, assembled, and painted . This new body of work is the most innovative, risky and exciting of my career because, I'm using four digital machines and a lot of technology that includes many new materials and a lot of experimentation.

Reptilian Meringue 2021



Clawson_13 – Reptilian Meringue – 2021 – 8'h x 2'w x 1' d – Suspended – Rigid foam, acrylic modeling paste, acrylic paint. Clawson 12 – 18 are all part of this new work leading to the show "Imagine This" scheduled for October, 2022 at the Holter Museum of Art.

Retro 2021



Clawson_14 – Retro – 2021 – 8'h x 2'w x .5' d – Wall-mounted – Rigid foam and acrylic paint.



Twist 82
2021

Clawson_16 – Twist 82 – 2021 – 14"h x 15"w x 6"d – Suspended – 3D print filament and acrylic paint.

**Chip Clawson's
"Upstairs Studio"
September, 2021**



Clawson_18 – Additional Studio Space – August 2021 – 12'h x 13'w x 32'd – The additional studio space is needed to store the new large work, 12' ceiling to build in and a large wall to photograph this work. This space will allow me to create sculptures using 2-part pourable foam in re-fitted and re-purposed fabricformed concrete forms (total height 12'). It is innovative and risky work with new materials and processes.