

# CELEBRATE MONTANA ART

---

ARTISTS' SHOWCASE & SALE / 2017



BROUGHT TO YOU BY THE MONTANA ARTS COUNCIL





## FOREWARD

### TALENT & PASSION

At the Montana Arts Council, we believe that artists are, by nature, inventors, engineers, explorers, and discoverers. Monetizing talent, however, is a daunting task for an artist. At the Montana Artrepreneur Program (MAP), we recognize that success in creating a sustainable life in the arts has its roots in strategic planning and relationship building.

Celebrate Montana Art is specifically designed to create an environment of real-time support for the diverse community of artists in the MAP network and to provide a forum for collaboration. As such, you'll meet both seasoned exhibitors as well as artists who may be showing their work in public for the first time. You'll meet fiercely, talented artists working in every medium from around the entire state.

And the artists you'll meet today are more than just talented. These people are brave – brave enough to commit their energies to the rigorous course that is the Montana Artrepreneur Program, brave enough put their fears aside and rise to the risks of entrepreneurship in a world that tells them to get a “real job,” and brave enough to dig deep into their hearts for inspiration – and then put it all out for the world to see. It's an accomplishment of courage and trust. We hope you make some new friends here, and we hope you'll purchase some Montana art.

Welcome – we're glad you're here.

*Sheri Jarvis*

SHERI JARVIS  
MONTANA ARTREPRENEUR PROGRAM DIRECTOR



Tremain Foundation



MONTANA ARTS COUNCIL  
COUNCIL MEMBERS

Cynthia Andrus  
CHAIRMAN  
Tom Cordingley  
VICE CHAIR  
Liz Albers  
Karen Bohlinger  
G.B. Carson  
Corwin Clairmont  
Sean Falcon Chandler  
JP Gabriel  
Mark Kuipers  
Tracy Linder  
Lynne Montague  
Arlene Parisot  
Jay Pyette  
Jean Steele  
Renée Westlake

MONTANA ARTS COUNCIL STAFF

Jenifer Alger  
CHIEF FINANCIAL OFFICER  
Kristin Han Burgoyne  
DEPUTY DIRECTOR, GRANTS  
DIRECTOR & ACCESSIBILITY  
SPECIALIST  
Tatiana Gant  
EXECUTIVE DIRECTOR  
Czelsi Kozak Gómez  
ADMINISTRATIVE & MEDIA  
SPECIALIST  
Monica Grable  
ARTS EDUCATION DIRECTOR  
Cinda Holt  
BUSINESS DEVELOPMENT  
SPECIALIST  
Sheri Jarvis  
MONTANA ARTREPRENEUR  
PROGRAM DIRECTOR

MAP SUPPORT SERVICES

Liz Chappie Zoller  
MAP PROGRAM ASSISTANT  
Rickie Van Berkum  
EXHIBIT DESIGN & ARTIST  
SERVICES  
K&J  
CONVENTION SERVICES

PROGRAM DESIGNED BY CZELSI GÓMEZ

MAPPING A SUSTAINABLE FUTURE  
IN THE ARTS

MAP is a professional practices program taught by working artists and open to all visual artists

- Providing over 40 hours of college-level instruction
- Reviewing 35 practical business tools
- Demystifying the world of business
- Affirming the title of “artist” as a credible profession

At the program’s heart is the philosophy that a sustainable career in the arts is attainable by advancing one’s proficiency in a chosen medium, understanding and proactively engaging in the arts community, confidently articulating one’s story and purpose as an artist and strategically seeking patrons for one’s work.

The Montana Arts Council engaged Decision Support Partners, Inc. to conduct a longitudinal study for artists’ sales across all years of the program. Artists in the program (2009-2014) reported increased net sales of 400-650% since participating in the program, with significant growth in out-of-state sales. These findings, and more, are exciting for Montana artists and prove that the program works.

Participating in MAP requires a commitment to attend monthly workshops and to invest financially in one’s business of art. There is a moderate fee and application process. The Montana Artrepreneur Program has earned national acclaim and has impacted more than 400 artists across Montana.



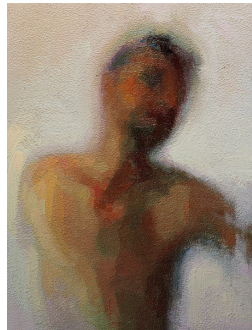
# PARTICIPATING ARTISTS



BOOTH: P317

**BOBBE ALMER**  
STARK MOUNTAIN STUDIO  
HUSON, MONTANA  
PAINTING  
BOBBE-ALMER.COM

Inspiration for Bobbe begins with light falling on the landscapes of western Montana. Her fascination with nature and the changing colors of the day compel her to capture in paint that fleeting moment in time.



BOOTH: F210

**NATHAN ANDERSON**  
BOZEMAN, MONTANA  
PAINTING  
NJANDERS.COM

Nathan paints the human form within a painter's surface. Paint and image; abstraction and representation; surface and depth—each contend for focus. The resulting tensions embody human beauty, complexity and struggle.



BOOTH: F204

**LORI BLAYLOCK**  
BILLINGS, MONTANA  
JEWELRY  
LORIBLAYLOCK.COM

Lori Blaylock designs uniquely beautiful pieces that celebrate nature and honor feminine strength and power. Each piece is an alchemy of elements that are designed for a specific purpose. Warm copper, natural stones, leather, bone, and antler are woven together to reflect the wilds of Montana and our ancestral nature.

**AMBER BLAZINA**  
BELGRADE, MONTANA  
PAINTING  
AMBERBLAZINA.COM

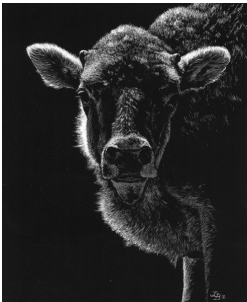
Growing up on the windswept prairies of eastern Montana on a secluded wheat farm, Amber formed a deep connection to nature, its landscape and the animals that dwell there. She creates interest, movement, and drama in her paintings by pushing the boundaries of the fundamentals – drawing, value, form, edge, tone.



BOOTH: F214

**JANICE BOGY**  
WHITEHALL, MONTANA  
DRAWING  
JANICEGBOGY.COM

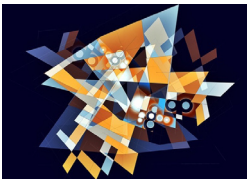
Often claiming she was born with a pencil in her hand, Janice brings the individuality and personality of animals to life in scratchboard. While she loves color, she is totally captivated by the drama of black and white media. Janice has earned national recognition for her mastery in animal art.



BOOTH: F105

**JOEL BOWERS**  
BILLINGS, MONTANA  
PAINTING  
RISINGRIMS.COM

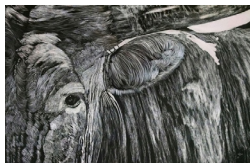
Suggestions of ideas encourage the viewers imagination. Exploring computer techniques, Joel Bowers of RisingRims.com makes digital images in unique and unusual ways.



BOOTH: F319



# PARTICIPATING ARTISTS

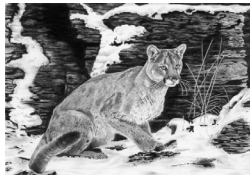


BOOTH: F107

## KODY BUNDY

VAUGHN, MONTANA  
DRAWING  
KODYBUNDY.COM

Kody's connection to animals began while exploring the rolling prairies, horseback on her father's farm. Using Scratchboard as her medium complements her attention to detail as well as bringing light out of darkness. She captures moments in time that tell the story of wildlife in wild places and western scenes.

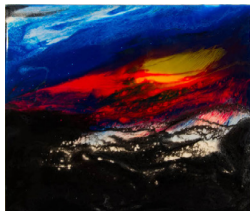


BOOTH: F103

## LYNN CAIN

TOWNSEND, MONTANA  
DRAWING  
LYNNCAINART.COM

The roots of Lynn's art are in rural Montana. His love of detail and realism reflect his philosophy "My art lives and breathes." Wildlife and landscapes come to life with his skillful use of tone, texture and contrast. Lynn embraces the honesty the humble pencil delivers with each drawing.



BOOTH: H304

## ED CHEBUL

HELENA, MONTANA  
MIXED MEDIA  
SIJUI100@YAHOO.COM

Ed is a self taught artist. He started out making wood art and has gravitated to now doing dyed resin art abstract paintings. These paintings depict many things both named by the artist and seen by the observer.

## CAROL CLARKSON

CAROL CLARKSON POTTERY  
MCALLISTER, MONTANA  
CERAMICS / CLAY  
CAROLCLARKSONPOTTERY.COM

Clay is her passion. Carol Clarkson is a functional and sculptural clay artist living in McAllister, Montana. Using terra cotta and stoneware clays with the addition of horseshoe nails, she creates whimsical horses, elk, and moose. Her functional ware is an impressionistic view of the wildlife surrounding her cabin studio.

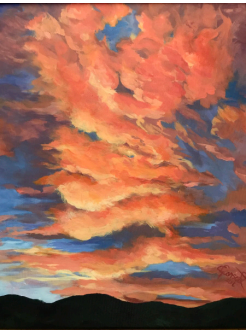


BOOTH: H122

## GILLIAN CONSORT

BUTTE, MONTANA  
PAINTING  
BEINGGILLY@GMAIL.COM

Gillian Consort is an emerging artist who takes her inspiration from many areas of life. Her goal is to be able to express and reveal the depth of the mystery that hides behind the patine of the mundane. She paints with both acrylic and oils on a variety of surfaces.



BOOTH: P307

## KAREN DADE

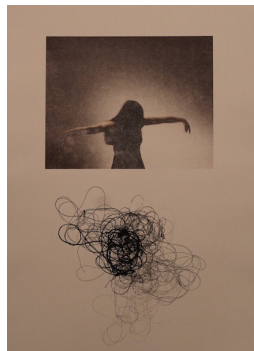
KODA DESIGNS  
BOZEMAN, MONTANA  
JEWELRY  
KODADESIGNSMONTANA.COM

Karen Dade is a Montana goldsmith with over 20 years of jewelry making experience. Her strong, elegant designs feature Montana Yogo Sapphires set in sterling silver, and 14K gold rings, necklaces and earrings. Each piece is carefully fabricated in her Bozeman studio using traditional tools and techniques.



BOOTH: H308

# PARTICIPATING ARTISTS



BOOTH: H221

MELISSA DAWN  
BOZEMAN, MONTANA  
MIXED MEDIA  
MELISSADAWNARTIST.COM

Like the body, memory also decays. Creation is an attempt to record what cannot be held, protecting against loss. It is a form of thinking that connects the physical and internal worlds, reaffirming their inseparability, and reclaiming the sensory experience of life.



BOOTH: H303

BARBARA DEBREE  
HELENA, MONTANA  
CERAMICS / CLAY  
HEALINGMOUNTAINARTWYRKS.COM

Barbara Nan DeBree grew up in the Montana mountains; this is where her passion for Montana subjects began. Barbara throws each piece and combines them with her original paintings and drawings. Her pottery is functional: inviting others to incorporate art into life, rather than keeping art separate from everyday existence.



BOOTH: F128

DULCIE FERGUSON-BELANGER  
HAMILTON, MONTANA  
CERAMICS / CLAY  
DULCIEBELANGER.COM

Walking on earth, listening to the river, feeling breezes, and allowing the fire of my will, I find solace. I'm curious about attitudes toward wild places. Our fears, love and dependency upon what sustains us. Through my art, I am exploring the human and nature connection. I invite you along.

JACK FINLEY  
ENNIS, MONTANA  
PAINTING  
JACKFINLEYSART.COM

Jack works in acrylic and oils to portray his favorite subjects, people and animal portraits. He tries to capture moods, attitudes, and to portray a bit of a story. He is a life long resident of Montana and is inspired by the people and the creatures that inhabit this magical paradise.



BOOTH: F111

SHELLEY FREESE  
DANCING COW STUDIO  
MILES CITY, MONTANA  
PAINTING  
DANCINGCOWSTUDIO.COM

Shelley Freese of Dancing Cow Studio creates classic watercolor illustrations for kids. She specializes in custom-commissioned, one-of-a-kind story paintings, as well as vivid, quirky new versions of Mother Goose rhymes. In 2017 she produced a whimsical children's book, "Teeny-Tiny ABC," and a 2018 wall calendar featuring her 1920's flapper character, Mary-Mary.



BOOTH: P119

LISA GIBSON  
LINCOLN, MONTANA  
PAINTING  
LISAGIBSONART.COM

Painting is one way Lisa intentionally focuses on the beautiful elements always present in our world. This focus connects us in positive ways and brings joy to your space. Acrylic is her favorite medium with its wide range of expressions. Ink, watercolor and colored pencil play supporting roles.



BOOTH: F202



# PARTICIPATING ARTISTS



BOOTH: F217

**SALLY GLUTTING**  
KALISPELL, MONTANA  
FIBER / TEXTILES  
ONELOOSETHREAD@GMAIL.COM

Quilts can be everywhere - on a bed, on the wall, on a table, or outside. Sally Glutting, quilter and fiber artist, believes in putting quilts and fiber art into everyday life, transforming cloth, thread, and beads into imaginative fiber art that invites you to celebrate the world around us.



BOOTH: F129

**BETH GREGORY**  
B GREGORY JEWELRY  
LIVINGSTON, MONTANA  
JEWELRY  
BGREGORYJEWELRY.COM

Beth creates artisan jewelry, using techniques in traditional silversmithing, precious metal clay, and copper enameling. Her work is inspired by a love of textures and a fascination with the malleable nature of the metal. Her designs incorporate playful experimentation, always focusing on the inherent beauty of the materials.



BOOTH: F109

**LAUREL HANSON**  
BILLINGS, MONTANA  
PAINTING  
LJHANSONFINEART.COM

Inspired by the sense of wonder and inborn ability of the unconscious, Laurel Hanson stills her thought processes and lets her hands freely paint the images of her soul.

**HELEN HARRIS**  
ENNIS, MONTANA  
FIBER  
HHTRAVELINGTHREAD@GMAIL.COM

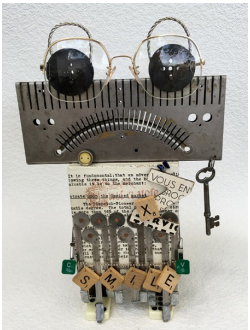
Helen is intrigued by the way a thread travels through the warp on a loom, small stitches that secure fabric or the hide of an animal. Weaving allows her to incorporate the colors of the Montana landscape and the intertwined textures of various fibers, within each work of art.



BOOTH: H309

**LIZ HARTER**  
HELENA, MONTANA  
SCULPTURE  
LIZEDESIGNSARTSCAPES.COM

Liz’s artwork was born of an eclectic, homespun education. The excitement of utilizing ‘found items’ and the element of story were woven through all she learned. Grounded in this multigenerational passion for expression, the predictable muse for her work became whimsical mixed media creations, with a “story” emerging for each.



BOOTH: F108

**ALANA HASTINGS**  
GREAT FALLS, MONTANA  
PAINTING  
ALANAHASTINGS.COM

Alana Hastings lives on the Ranch at Truly, Montana. Alana is inspired by the surroundings of flowers, landscapes, and still lifes. The energy of each scene is processed through the brush strokes onto the canvas with love and passion to develop the painting. Enjoy the process.



BOOTH: H124

# PARTICIPATING ARTISTS



BOOTH: H123

**ERIN HAWLEY**  
RAG AND STONE  
WHITEFISH, MONTANA  
JEWELRY  
RAGANDSTONESTUDIO.COM

Erin builds jewelry inspired by our vivacious mother nature, the zesty souls who play in the wild west, and the sometimes harsh climate women adventurers find themselves in. She builds everything by hand and strives to build heirloom jewelry that withstands both outdoor work AND play.



BOOTH: F206

**JUDY JOHNSON**  
LINCOLN, MONTANA  
PAINTING  
JUDYJOHNSONART@GMAIL.COM

Painting on canvas expresses Judy’s love of Montana outdoors, lifestyles, wildlife and animals. Her satisfaction comes when the viewer pauses, smiles, turns and tells her of their memories of a team of horses, a dog or mule, then she has reached her goal of Telling the Story of Montana.



BOOTH: F114

**KATHERINE JORE**  
DAY DREAM HOUSE  
HUNTLEY, MONTANA  
PAINTING  
DAYDREAMHOUSE.COM

Originally from South Dakota, Katherine Jore came to Montana in 1998. College in Minnesota deepened her appreciation of outdoor landscapes. Drawing on a lifetime spent creating with a variety of materials, she blends nature, pattern and texture. This forms work that shows nature in exaggerated color and bold, abstract form.

**ANJULI KELLER-KING**  
EUREKA, MONTANA  
MIXED MEDIA  
FOXSPIRITDESIGN.COM

Anjuli of Fox Spirit Design creates one-of-a-kind mixed media and body art pieces inspired by stories, myths, and personal experience. Each one is a unique narrative that integrates the restorative wildness of the northwest Montana woodlands and the shared symbolic language of human history.



BOOTH: F112

**SUSAN KENDRICK**  
BARLEYSEED WOODCRAFT  
BOZEMAN, MONTANA  
WOOD  
BARLEYSEEDWOODCRAFT.COM

Susan Kendrick uses hand tools to carve and sand wood spoons and kitchenware. Her treenware is elegant, unique usable art reminiscent of a bygone era when woodenware was the norm. Her work is sold and displayed in Montana galleries, and private collections around the US and Canada.



BOOTH: F213

**REBECCA KINANE**  
HUSON, MONTANA  
PAINTING  
REBECCALYNNESART.COM

Born and raised in Montana and surrounded by its astounding beauty, Rebecca Lynne Kinane is an acrylic painter using shapes, motion, and striking color in a unique style that serves to capture the wonder and majesty of the wildlife that guides her paintbrush and calls the Big Sky Country home.



BOOTH: F207



# PARTICIPATING ARTISTS



BOOTH: F208

## IVETTE KJELSRUD

GREAT FALLS, MONTANA  
PAINTING  
IVEZART.COM

Ivette’s paintings are bright yet delicate and they combine realism and abstraction, inspired by nature and the West. Her work is about contrasts and polarities, freedom and union. It’s about beauty, dreams and finding a place in this world. Her work is about discovering the middle way between extremes.



BOOTH: H222

## CARRIE KOHLES

GREAT FALLS, MONTANA  
PAINTING  
CARRIEKOHLES.COM

Montana artist Carrie Kohles never has a shortage of inspiration because, in her words, “Montana is pure magic. It is the essence of this magic that resides at the core of my work, and the spirit of the subject or landscape that defines the brush strokes and colors I use.”



BOOTH: F113

## LYNN LIEBERS

THREE FORKS, MONTANA  
PHOTOGRAPHY  
LYNNLIEBERSPHOTO.COM

Photography, for Lynn, is actively looking for inspiring illumination and capturing well-lit images in order to boldly awaken the senses of the viewer. Her creative self is energized and her soul is fed when in a mountain meadow framing the shot and catching breathtaking landscape images that are uniquely her’s.

## BARBARA LISS

HAMILTON, MONTANA  
SCULPTURE  
MONTANABLISSARTWORKS.COM

Buildings were her landscape growing up in Chicago where Barbara admired the qualities of concrete. She incorporated concrete in her garden landscape where her art form emerged. Faces appealed to her, immortalized in concrete. She names them during the sculpting process; as they are emerging they inspire her.

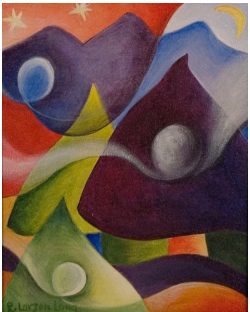


BOOTH: F104

## RACHEL LONG

BILLINGS, MONTANA  
PAINTING  
RACHEL.LARSON.LONG@GMAIL.COM

Through acrylic painting and mixed-media work, Rachel shares her vision of a multi-layered world full of symbolic meaning. Whether in colorful abstractions or more representational images, she conveys a sense of the depth and connectedness of the human and natural world.

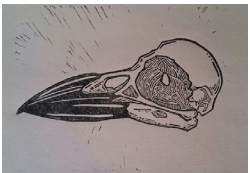


BOOTH: P310

## CHRISTINE MARTIN

BUTTE, MONTANA  
PRINTMAKING  
FACEBOOK.COM/LOSTORNITHOLOGY

Christine Martin is a Printmaker living in Butte, Montana building a bridge between the industrial steel-milling landscape of her native Pittsburgh and the mining wastes of Butte. She explores the effects of the industrial world on the natural world through her work by playing on the idea of mutation.



BOOTH: H116

# PARTICIPATING ARTISTS



BOOTH: F102

MARY JEAN MARTIN  
HELENA, MONTANA  
FIBER / TEXTILES  
MARYJEANMARTIN.COM

Color is Mary Jean Martin’s poetry, combined into handwoven fabric and mixed-media collage paintings. Ancient weavers and ten thousand years of evolving culture sit with her as she weaves. Mary Jean feels connected to these people and wonders what they thought about as they sat at the loom. Probably color!



BOOTH: F110

SIERRA MCCLAIN  
WHITEHALL, MONTANA  
PAINTING  
SIERRAMCCLAIN.COM

Faced with the possibility of dying after her second stem-cell transplant, Sierra McClain picked up a paintbrush and painted the world she wished she lived in, a bright and happy world full of hope. She continues to paint because art is her passion and her therapy.



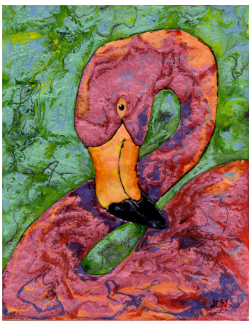
BOOTH: F115

WANDA MUMM  
EUREKA, MONTANA  
PAINTING  
WANDAMUMM.COM

Wanda Mumm’s oil paintings capture the engaging and special quality of western light. Her alluring oil depictions inspired by the west have enriched her life and those who enjoy her work.

JC NEEDLES  
VICTOR, MONTANA  
PAINTING  
JCNEEDLES.COM

JC Needles is a self-taught artist who is currently working with liquid oils using simple line drawings and letting the colors bring them to life. Everyone is creative and each of us has their own unique way of expressing that creativity. JC is using color to explore her world.



BOOTH: H305

JENNIFER OGDEN  
HAMILTON, MONTANA  
MIXED MEDIA  
OGDEN@VICTOR.K12.MT.US

Jennifer digs through used paper like a miner searching for flashes of color, pattern and texture, recombining those elements to fit her people, places and experiences. Collage is painting in slow motion. As the image emerges, she invites the viewer to sift through layers of time, memory and experience.



BOOTH: F128

DIANE OLHOEFT  
MISSOULA, MONTANA  
PAINTING  
DIOLHOEFT@YAHOO.COM

Diane loves the colors and free flowing way the watercolor paint goes on paper. It seems to be in tune with the unpredictability, adaptability and movement of nature. Silk painting has the free spirit of watercolor with the added advantage that you can wear it and it feels so good.



BOOTH: F216



# PARTICIPATING ARTISTS



BOOTH: P301

## SHERRY OSTER

GUMBO LILY POTTERY  
MILES CITY, MONTANA  
CERAMICS / CLAY  
GUMBOLILYPOTTERY.COM

Gumbo Lily pottery is made with rustic simplicity and elegant durability, reflecting the land from where it came. Every Gumbo Lily piece is unique, and carries with it the essence of America’s ranching heritage and the sweeping landscapes of the Great Plains.



BOOTH: F205

## LINDA PARKER

HELENA, MONTANA  
FIBER / TEXTILES  
MONTANAQUILTS.COM

The hot summer winds bring Mother Nature’s cleansing agent: FIRE. At Parker Snowe Fiber Art, fire is the catalyst for quilts that pulse and dance with the energy and rhythm of a crackling blaze. As a wildland firefighter, Linda touched the flames. Now she incorporates that heat into her work.



BOOTH: F203

## MATTHEW PIEDALUE

MONSTER POTTERY  
BOZEMAN, MONTANA  
CERAMICS / CLAY  
MONSTERPOTTERY.COM

Matt is fascinated with the ability of clay to take on nearly any shape an artist desires, including objects people use in their homes every day. With an aesthetic sculpted by science fiction and comic books, Matt makes pottery that is beautiful and useful, but also bizarre, unexpected and humorous.

## BEV. POLK

WEAVERBIRD STUDIO  
WILSALL, MONTANA  
FIBER / TEXTILES  
BEVPOLKHANDWEAVER.COM

“Wake up to COLOR and your coffee will smile!” So says Handweaver Bev. Polk who lives, loves and weaves at the edge of a town that time forgot in a space called Weaverbird Studio. Influenced by Scandinavian colors and practicality, she weaves table runners and toppers, towels and sofa pillows.



BOOTH: F201

## KAY POTTER

K POTTER FINE ART  
LIVINGSTON, MONTANA  
PAINTING  
KPOTTERFINEART.COM

For K, art is the ultimate expression because meaning often gets lost or changed with words. She uses color, linework and composition to communicate meaning through an experience. Her portrayal of wildlife brings out their unique personalities and bridges the gap between animal and human.

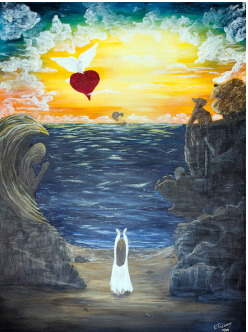


BOOTH: F211

## DEANNE PRIDEAUX

GREAT FALLS, MONTANA  
PAINTING  
DEANNEPRIDEAUX@YAHOO.COM

Deanne is a prophetic artist painting the visions she receives during worship, prayer and meditating upon Scripture. Her desire is to release destiny, hope and healing through her paintings.



BOOTH: F215

# PARTICIPATING ARTISTS

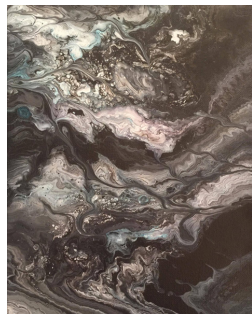


BOOTH: P316

## BECKY RATLIFF

RATBONE CREATIONS  
CLYDE PARK, MONTANA  
GLASS  
RATBONECREATIONS.COM

Becky Ratliff captures color, shape and textures of rocks, skies and everyday objects in her work by building details in layers of glass that fuse together when fired in the kiln.



BOOTH: F212

## BETH REGELE

BILLINGS, MONTANA  
MIXED MEDIA  
FACEBOOK.COM/CONFETTIHEARTSTUDIO

Beth draws her inspiration for her flowing, dreamy paintings from growing up under Montana’s big sky. She has spent many nights admiring the stars. She loves to collaborate with fluid acrylic and alcohol inks, and watch as they create their own paths and stories.



BOOTH: F127

## ANNE ROSS

LIGHT BLOOMER STUDIO  
BOZEMAN, MONTANA  
PAINTING  
LIGHTBLOOMERSTUDIOS.COM

Anne KM Ross takes light-bulb moments, cultivating them into blooming works of art: creating pseudo-abstract, dream-like art allowing the viewer to unfold in the visual story. Her paintings include clearly executed subjects like animals on swirling marbled or abstracted backgrounds to bring a modern splash of color to your home.

## BARBARA RUSMORE

BOZEMAN, MONTANA  
PAINTING  
BARBARARUSMORE.COM

Barbara Rusmore’s oil paintings explore the dynamic space of western landscapes and its intimate deep peacefulness. Created on location, her paintings carry this vital connection and energy to the viewer. Her studio work takes this experience into deeper explorations of design and translation into larger works.



BOOTH: F130

## KAREN SAVORY

SIMPLY SAVORY ART  
HAMILTON, MONTANA  
PAINTING  
SIMPLYSAVORYART.COM

Karen Savory’s art feeds her soul and expresses the utter joy she feels when wandering the mountainsides surrounding her Montana log cabin. Her bright and playful watercolor paintings celebrate Nature as the aspen trees dance before her, the coyotes sing, and the wind whispers secrets in her ears.

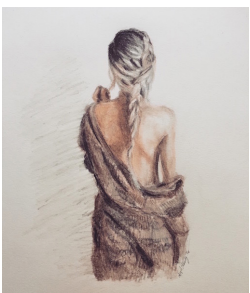


BOOTH: F106

## ANGEL SHANDY

BILLINGS, MONTANA  
DRAWING / ILLUSTRATION  
ANGELMSHANDY@GMAIL.COM

Angel Shandy brings her characters to life with the stroke of a pen or brush. Her illustrations invite the viewer to feel the pull of the fantastic and fuels their desire for the majestic. Using her art as the vessel, she transports the viewer to a captivating new world.



BOOTH: P117



# PARTICIPATING ARTISTS



BOOTH: H125

## KEVIN SILKWOOD

HAMILTON, MONTANA  
CERAMICS / CLAY  
SILKWOODPOTTERY.COM

Kevin Silkwood is a ceramic artist and educator. His primary work revolves around the unpredictability of raku art. His recent work explores a hands-on approach and interaction with techniques including horse hair and feathers. Actively engaged with the work, timing and precision are crucial in this tactile approach to the creative process.

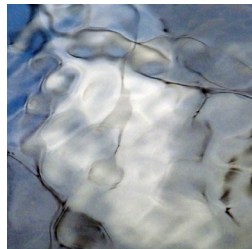


BOOTH: H120

## TRUDY SKARI

HELENA, MONTANA  
CERAMICS / CLAY  
TRUDYSKARI@GMAIL.COM

The artist’s intention is to form clay objects in a way that gives voice to human understanding of the inner and outer realms, assisting in the revelation of the superconscious connection to the enviroment. There is a hope that the work will promote a bit of a giggle.



BOOTH: P318

## YOUPA STEIN

YOUPA STEIN VISUAL ARTS  
ARLEE, MONTANA  
PHOTOGRAPHY  
YOUPASTEINVISUALARTS.COM

Contemporary Montana artist Youpa Stein creates masks, sculpture and fine art photographs expressing uncommon views of natural forms. She loves finding intimate, often abstract, details in the environment and collaborates with materials such as alder bark or light on water to illuminate and revitalize our connection to the earth.

## DANIELLE TATSAKRON

BILLINGS, MONTANA  
PHOTOGRAPHY  
DEETATS.COM

Photography by Dee Tats, which includes portraits, landscapes, and still lifes, are reflections of images she sees in her head, much like paintings to a painter. Dee uses specific lighting techniques and angles to create dramatic images that evoke emotion. Dee Tats creates insightful photography that touches the soul.

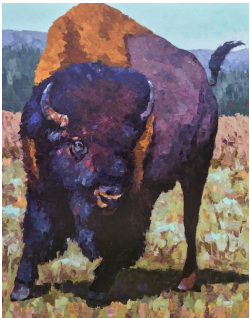


BOOTH: H220

## KARA TRIPP

BOZEMAN, MONTANA  
PAINTING  
KARATRIPPARTIST.COM

Kara Tripp is a palette-knife oil painter and Montana native. Her work is recognizable by the blend of traditional subjects and bold technique. Kara’s favorite subjects include pheasants and bison. Her sole use of a palette knife adds a fresh contemporary twist to her paintings often resembling mosaic or collage.



BOOTH: H306

## VICTOR VOSEN

HERON, MONTANA  
PAINTING  
VICTORV.US

Wandering this World, Victor wonders about the wide open spaces... the valley he lives in, painting it, and taking home a small part of it in painting or picture. How can we be so concerned with worshipping the creator, and be so busy destroying his creation?



BOOTH: H118

# PARTICIPATING ARTISTS



BOOTH: H121

**DIANE WHITE**  
CLANCY, MONTANA  
PAINTING  
DIANEHWHITEART@GMAIL.COM

Diane’s paintings are inspired by her Montana and Midwest roots. Home is a feeling and not a specific place. Taking the back road home, her paintings evoke a welcoming feeling. She lives in the country on a creek and hot springs, next to the Helena National Forest, in Clancy, Montana.



BOOTH: F209

**ANN WILBERT**  
LOVE, MONTANA STUDIO  
BELGRADE, MONTANA  
JEWELRY  
LOVEMONTANASTUDIO.COM

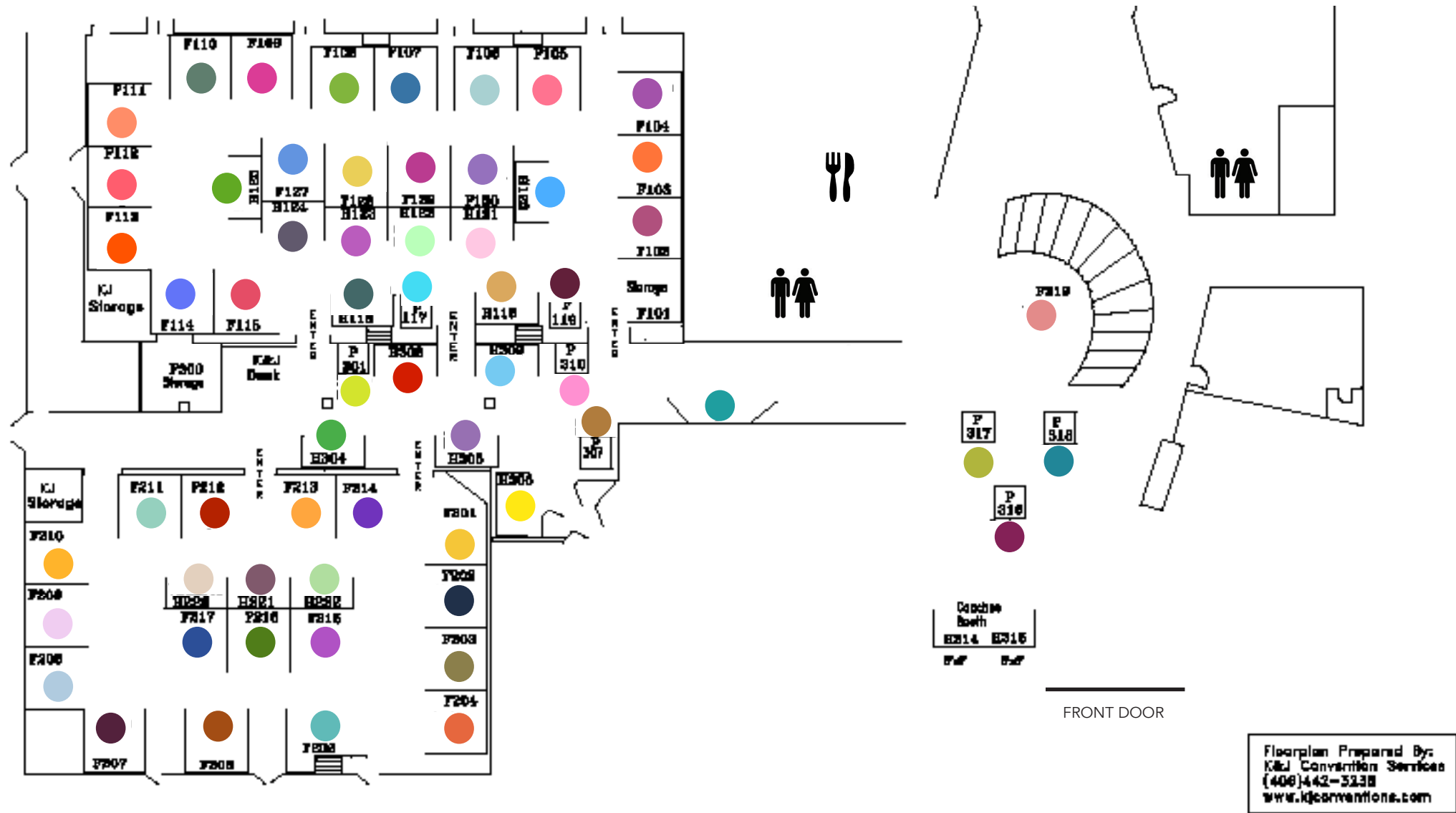
Ann creates beads of glass using a dual fuel torch and a kiln. Finished beads are then used in her one-of-a-kind jewelry designs. Ann’s work is heavily influenced by the landscape of Montana, and has an earthy, casual, western feel.

We have a mission to help artists build a sustainable life in the arts. To fulfill that mission, the Montana Arts Council has provided a program to Montana artists called the Montana Artrepreneur Program (MAP) each year since 2009. In-person, group-learning opportunities are offered in six regions throughout the state, Northwest, North-Central, Northeast, Southwest, South-Central, and Southeast, and hosted in communities where the most interest exists.





# BOOTH MAP



## INTERESTED IN BECOMING A PART OF THE MONTANA ARTREPRENEUR PROGRAM?

Sheri Jarvis  
MAP Director  
(406) 865-0884  
sherijarvis@mt.gov

## FOR MORE INFORMATION AND TO APPLY

Visit [art.mt.gov](http://art.mt.gov)  
or email [map@mt.gov](mailto:map@mt.gov)

### INSIDE FRONT COVER

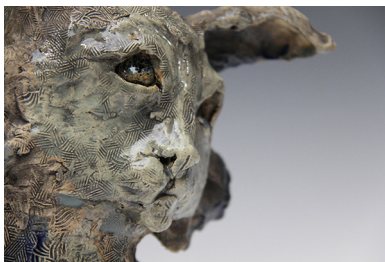
- 1 BOBBE ALMER
- 2 LORI BLAYLOCK
- 3 AMBER BLAZINA
- 4 GILLIAN CONSORT
- 5 NATE ANDERSON
- 6 KARA TRIPP
- 7 CAROL CLARKSON
- 8 JANICE BOGY
- 9 LYNN CAIN
- 10 ED CHEBUL
- 11 KODY BUNDY
- 12 KAREN DADE
- 13 BARBARA DEBREE
- 14 DULCIE FERGUSON-BELANGER
- 15 KAY POTTER
- 16 MELISSA DAWN
- 17 JACK FINLEY
- 18 SHELLEY FREESE

### INSIDE BACK COVER

- 19 BETH GREGORY
- 20 LAUREL HANSON
- 21 HELEN HARRIS
- 22 LIZ HARTER
- 23 ALANA HASTINGS
- 24 ERIN HAWLEY
- 25 JUDY JOHNSON
- 26 KATHERINE JORE
- 27 ANJULI KELLER-KING
- 28 REBECCA KINANE
- 29 IVETTE KJELSRUD
- 30 CARRIE KOHLES
- 31 BARBARA LISS
- 32 MARY JEAN MARTIN
- 33 SIERRA MCCLAIN
- 34 JENNIFER OGDEN
- 35 SHERRY OSTER
- 36 BEV. POLK
- 37 ANNE ROSS
- 38 KEVIN SILKWOOD







FROM TOP TO BOTTOM: CAROL CLARKSON, BEV. POLK, TRUDY SKARI



CELEBRATE MONTANA ART  
MONTANA ARTREPRENEUR PROGRAM  
MONTANA ARTS COUNCIL

ART.MT.GOV / (406) 444-6430



Tremain Foundation



ARTISTS FEATURED ON COVER: TOP: SIERRA MCCLAIN  
BOTTOM FROM LEFT TO RIGHT: MATT PIEDALUE, BETH GREGORY

1,000 COPIES OF THIS PUBLIC DOCUMENT WERE PUBLISHED AT AN ESTIMATED COST  
OF \$2.686 PER COPY, FOR A TOTAL COST OF \$2,686.00, WHICH INCLUDES \$2,686.00  
FOR PRINTING AND \$0.00 FOR DISTRIBUTION.